



MAGNETIC  
MAHARASHTRA 2.0

#MadeForBusiness

# Maharashtra: The Manufact

---

Robust Policies, Conducive Ecosystem and Skilled Manpower

1st India-Japan Business Seminar organised by The Osaka City and Osaka Port Promotion

24th Feb 2021



# India-Japan Economic Overview

## Strong Trade Relationship

The bilateral trade between India and Japan for **FY 2019-20** totaled **USD 16.85 billion**

India's exports from Japan amounted to **USD 4.5 billion** while India's import from Japan amounted to **USD 12.43 billion**

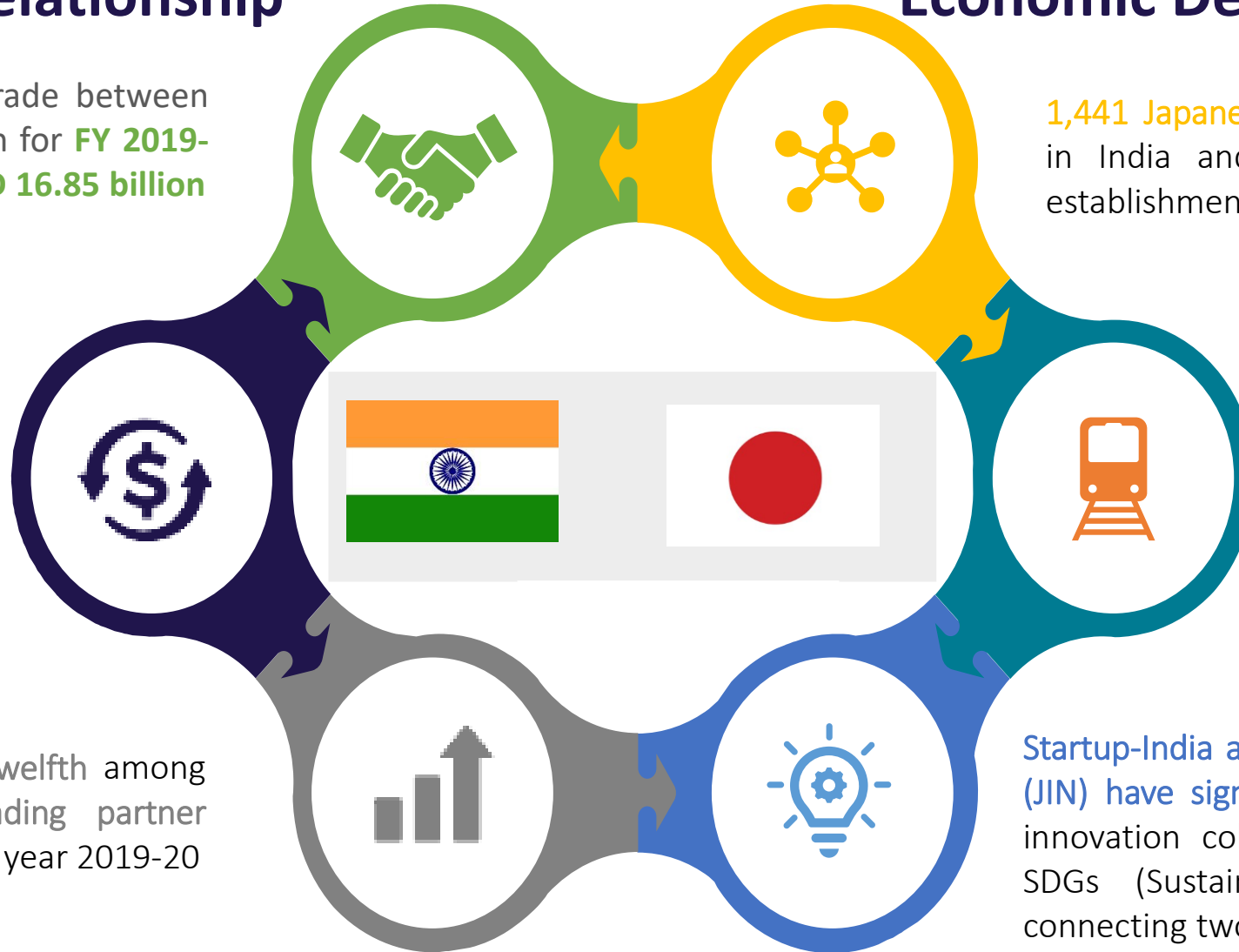
Japan ranked twelfth among the major trading partner countries in the year 2019-20

## Economic Development Partners

**1,441 Japanese companies** were registered in India and a total of **5,102 business establishments** (as of October 2018)

Japan is a **key ODA partner for India** supporting India's efforts for **accelerated economic development** in priority areas like power, transportation, environmental projects and projects related to basic human needs

**Startup-India and Japan Innovation Network (JIN)** have signed a **MoU in June 2018** on innovation collaboration with a focus on **SDGs (Sustainable Development Goals)** connecting two start-up eco-systems



# Japanese Business Ecosystem in Maharashtra

*Maharashtra is the biggest and the most attractive investment destination in India with robust policies, mature infrastructure and skilled manpower.*



**USD 7.2K Mn or  
~22.5%**

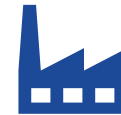
Share of Maharashtra in FDI  
Inflows from Japan in the last  
20 years



Maharashtra is ranked **#1 state** in India in terms of attracting FDI from Japan in India in the last 20 years



Highest number of Japanese Business Establishments among Indian states (800+ as of October 2018)



**240+ Japanese Companies** are present in the State (as of 2018)



JETRO has partnered with NASSCOM and signed an MoU with the Maharashtra State Innovation Society (MSinS) to identify financial and strategic investment opportunities



An exclusive industrial park for **Japanese companies** has been created in **Supa Parner industrial** area in Maharashtra as part of an MoU between the Jetro and MIDC



**Konnichiwa Pune** - A first of its kind business festival hosted by Indo Japan Business Council (IJBC) held in Pune in November 2018 to boost investment, promote businesses and cultural exchange between India and Japan.

# Advantage Maharashtra

Maharashtra's GDP size is **\$480 billion**; accounting for **16%** of India's GDP.



**Largest GDP**

Attracted **\$140 billion** FDI in 2000-2020; accounting for **30%** of India's share.



**Largest share in**

Maharashtra contributes to **15%** of the Industrial output in India.



**Leader in**

**In India**

Maharashtra has one of the highest Per Capita Income in India at **\$3,190** in 2019-20



**High Per capita**

Maharashtra has the highest value of exports; accounting for **21%** of India's exports



**Leader in**

**Manufacturing**

Maharashtra has the highest employable talent in India at **68%**.



**Best Quality**

**Income State**

Largest base of Internet Subscribers in India at **87 million**. **131 million** telecom subscribers.



**Growing Digitization**

One of the leading state with **710** Engineering and Technology Colleges



**Best Colleges**

**5** International & **13** domestic airports, **2** major & **53** minor ports, and largest power capacity.



**Mature**

# Infrastructure-led Growth

## Navi Mumbai International Airport

Total cost: USD 2.6 Billion.  
Passenger Capacity:  
60 Million/Year

## Mumbai Trans-Harbour Link

Total cost: USD 2.2 Billion  
Yearly Ridership: 14 Million

## International Financial Services Centre

To be located at BKC, Mumbai  
Pathway to making Mumbai a  
Global Financial Hub

## The Mumbai Coastal Road

Total cost: USD 1.7 Billion.  
Projected Use: 130,000 vehicles  
daily

## Metro Projects in Pune, Mumbai and Nagpur

Total cost: \$21.8 billion  
Daily Ridership: 9 Million

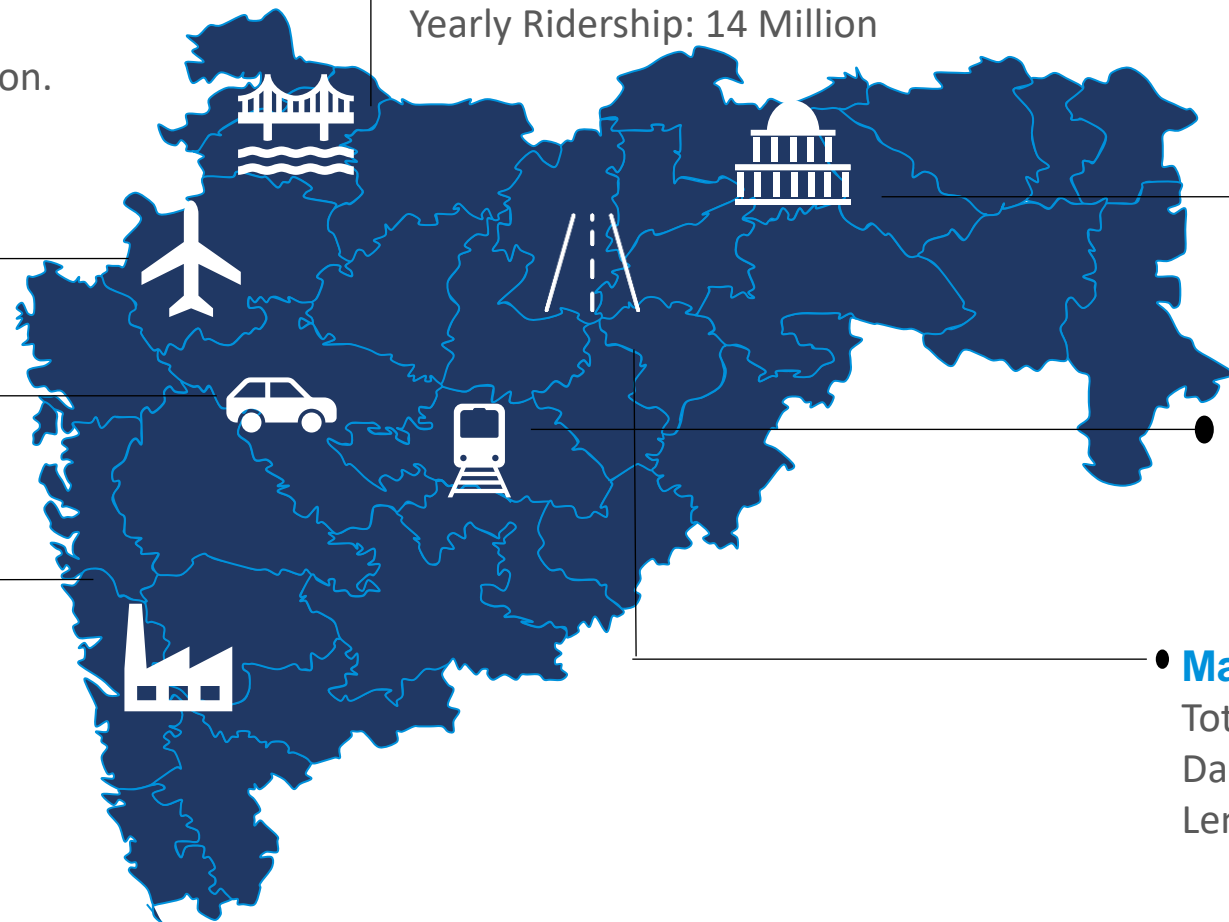
## Delhi – Mumbai Industrial Corridor

Total cost: USD 90 Billion  
Two Industrial nodes in MH

- AURIC (Aurangabad)
- Dighi (Raigad)

## Maharashtra Samruddhi Mahamarg

Total cost: \$6.9 Billion  
Daily Ridership: 11 Million  
Length: 700 km (435 miles)



**30+** Number of Mega Projects  
under development

**\$40 Bn** Total Investment in  
Transport Infrastructure

**+48 Mn** Population  
Impacted



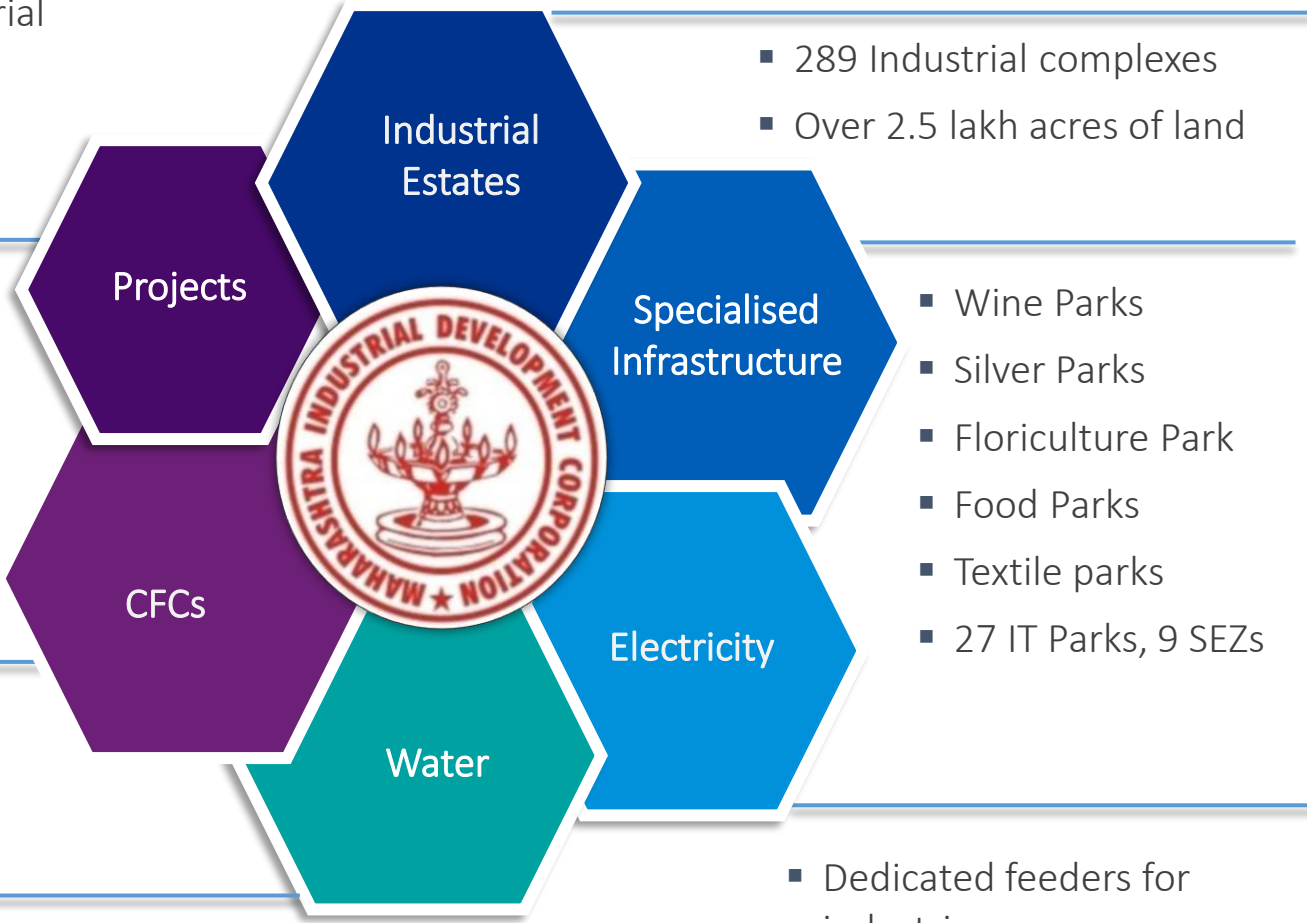
# MIDC: Nodal Agency for all Investors

Maharashtra Industrial Development Corporation (MIDC) is the nodal Investment Promotion agency under the Government of Maharashtra. It provides businesses with infrastructure such as land, roads, water supply, drainage facilities and streetlights etc.

- Delhi Mumbai Industrial Corridor (DMIC)
- SUPA – Japanese Investment Zone

- 13 Chemical Zones
- 19 CETPs<sup>1</sup>
- 2 STPs<sup>2</sup>
- 4 CHWTSDF<sup>3</sup>

- Largest water supply network in Asia
- 2500 MLD per day



## Key Activities

Special planning authority

Strong network of local authorities

Link between Govt. and Industry

Acquisition and disposal of land

Providing support Infrastructure

One-stop for Investors Relations

<sup>1</sup>Common Effluent Treatment Plants <sup>2</sup>Sewage Treatment Plants <sup>3</sup>Common Hazardous Waste Treatment, Storage & Disposal Facility

# Maharashtra: Leading In Developed and

## Emerging Sectors



# Magnetic Maharashtra 2.0: Key Reforms

## Launched



### 1. Plug and Play Infrastructure

Allowing investors to utilize a ready to use infrastructure complete with affordable rental sheds, comprehensive utilities, expat housing, modular spaces in a 100% compliant ecosystem.

6 Regions | 250 Acres | 450 Sheds



### 2. Maha Parwana (Accelerating Permissions)

A single window clearance system for FDI & large investors that meet statutory norms to start operations within 48 hours

20+ Departments | 100+ Permissions



### 3. Maha Jobs

Dedicated industrial employment portal, launched in July 2020, aims to help new and potential investors employ the vast and skill rich local talent in Maharashtra on the portal across 17 sectors and 950+ job roles

2.94 L Applicants | 2,731 Employees | 38,042 Jobs



### 4. Investor First Programme

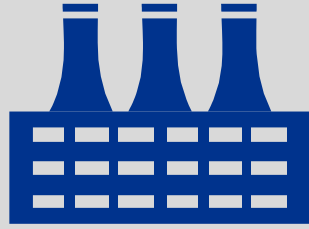
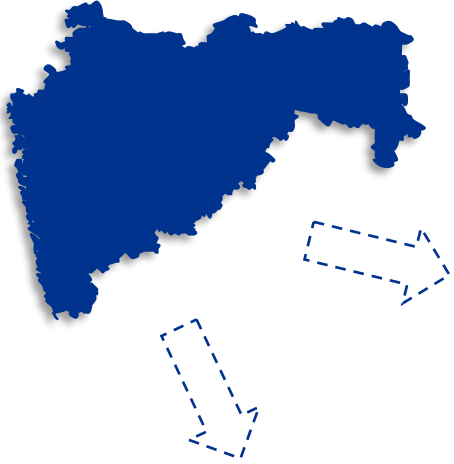
Relationship Managers (RMs) and Relationship Executives (REs) will be assigned to large investors for overall co-ordination and providing necessary support to the Investors on continuous basis.

Assigned to 54 MoU Partners | 10 Investment Fellows

*Championed by a Relationship Manager/ Task Team*



# Maharashtra's Robust Policy Ecosystem



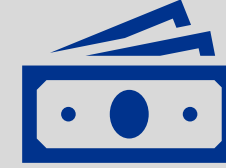
Industrial Policy,  
2019 & Package  
Scheme of  
Incentives, 2019



Aerospace and  
Defence  
Manufacturing  
Policy 2018



IT/ITeS Policy 2015



Fintech Policy  
2018



Electronic & Fab  
Policy 2018



Electric Vehicle  
and related  
Infrastructure  
Policy 2018



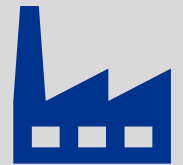
Food Processing  
Policy



Integrated  
Logistics Parks  
Policy 2018



Textile Policy 2018



Incentive for  
Development of  
Integrated  
Industrial Area -  
2018

Maharashtra has designed industry and sector friendly policies by keeping specific sector's demand in mind.

The state is consistently updating its incentives and offerings in line with the changing global economic dynamics and business scenario

**Few major policies in pipeline:** *IT/ITeS Promotion Policy 2021, ESDM Policy, Data Center Policy, among others.*

# MIDC's expanding land bank

Mumbai-Thane-Raigad | 15,000 Acres

Engineering | Food Processing | Auto & Components |  
Chemicals | Pharmaceutical |

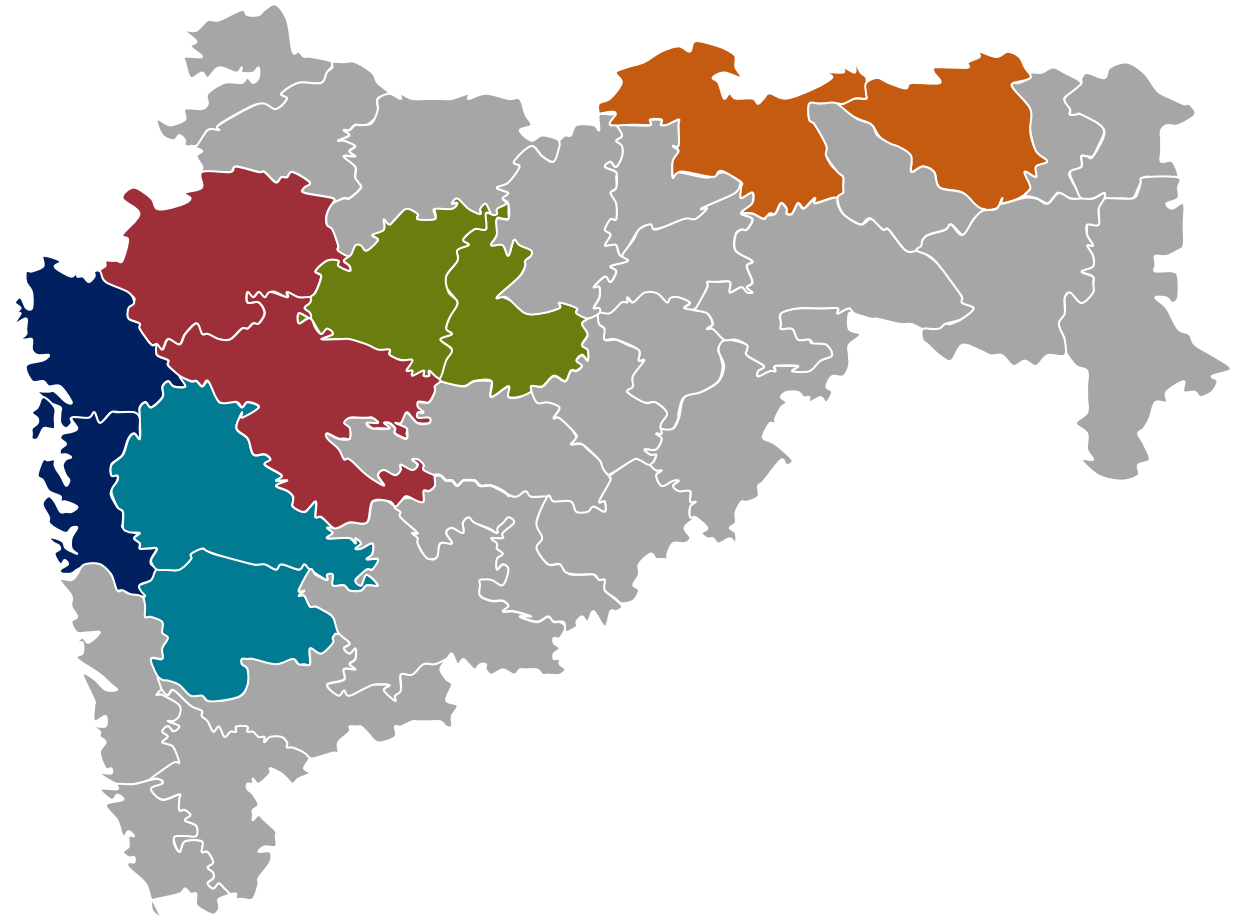
Pune-Chakan-Talegaon-Satara | 8,000 Acres

Data Centre | Gems & Jewelry | Engineering | Food  
Processing | Auto & Components | ESDM | Logistics

Nashik-Malegaon-Ahmednagar | 5,000 Acres Food  
Processing | Medical Equipment | ESDM | Engineering

Aurangabad (AURIC, DMIC)-Jalna | 8,000 Acres  
Food Processing | Auto & Components | ESDM | Textile

Nagpur – Amravati | 4,000 Acres  
Aerospace & Defence | Engineering | Textiles | Food  
Processing



# Supa, Ahmednagar – A Dedicated Japanese Industrial Park



## Air Connectivity

Pune	80 km
Aurangabad	150 km
Mumbai	230 km



## Road Connectivity

Ahmednagar	40 km
Pune	90 km
Aurangabad	115 km



## Port Connectivity

JNPT	213 km
MBPT	232 km
Dighi	259 km



## Railway Connectivity

Pune	90 km
------	-------

# Supa Industrial Area (Japanese Industrial Park): Infrastructure



## Road & Connectivity

- All internal roads of SUPA have been completed (17 kms and 7.5 meter wide)



## Water Availability

- **2 Million Liter per Day (MLD) available**
- **13 MLD** of water will be made available for industries **from March 2021**
- Centralized Waste-Water Treatment with maximum capacity of 63 MLD in Ahmednagar



## Power Availability

- Power for Construction is available at **11 KV Voltage Level**
- Power supply network of **33kv/11kv Sub Station with two 10 MVA (10,000 KVA) transformers** has been completed
- **11 KV power supply** along with distribution transformer center will be completed **by June-2021**
- **33 KV switching sub- station** with 6 outgoing 33 KVs express/ non express feeder will be completed **by June - 2021**



## Streetlights

- Streetlights are operational since January 2019



# Supa Industrial Area (Japanese Industrial Park) - Road Connectivity





# MIDC Water Treatment Plant - Ahmednagar



**Water Treatment Plant**

# Supa Industrial Area - Presence of Companies



# Major Investors from Japan

**BRIDGESTONE**

**FUJITSU**

**FE** Fuji Electric

 **MITSUBISHI  
ELECTRIC**

**HORIBA**  
Explore the future

 Color & Comfort

 **NIPRO**

**Denyo**





  
**ORIENTAL YEAST CO.,LTD.**

**Camlin**   
**KOKUYO**

 **DMW CORPORATION**  
Passion for the Next Innovation

 **NIPPON PAPER GROUP**

**KEIHIN** 

 **KANSAI  
NEROLAC**  
PAINTS LIMITED



# Thank You



## Maharashtra Industrial Development Corporation

Udyog Sarathi, Mahakali caves road,

Andheri (E), Mumbai – 400 093

Board Number: 91-22-26870027/52/54/73

Fax: 91-22-26871587

Email: [ceo@midcindia.org](mailto:ceo@midcindia.org)

Website: [www.midcindia.org](http://www.midcindia.org)

**#MadeForBusiness**